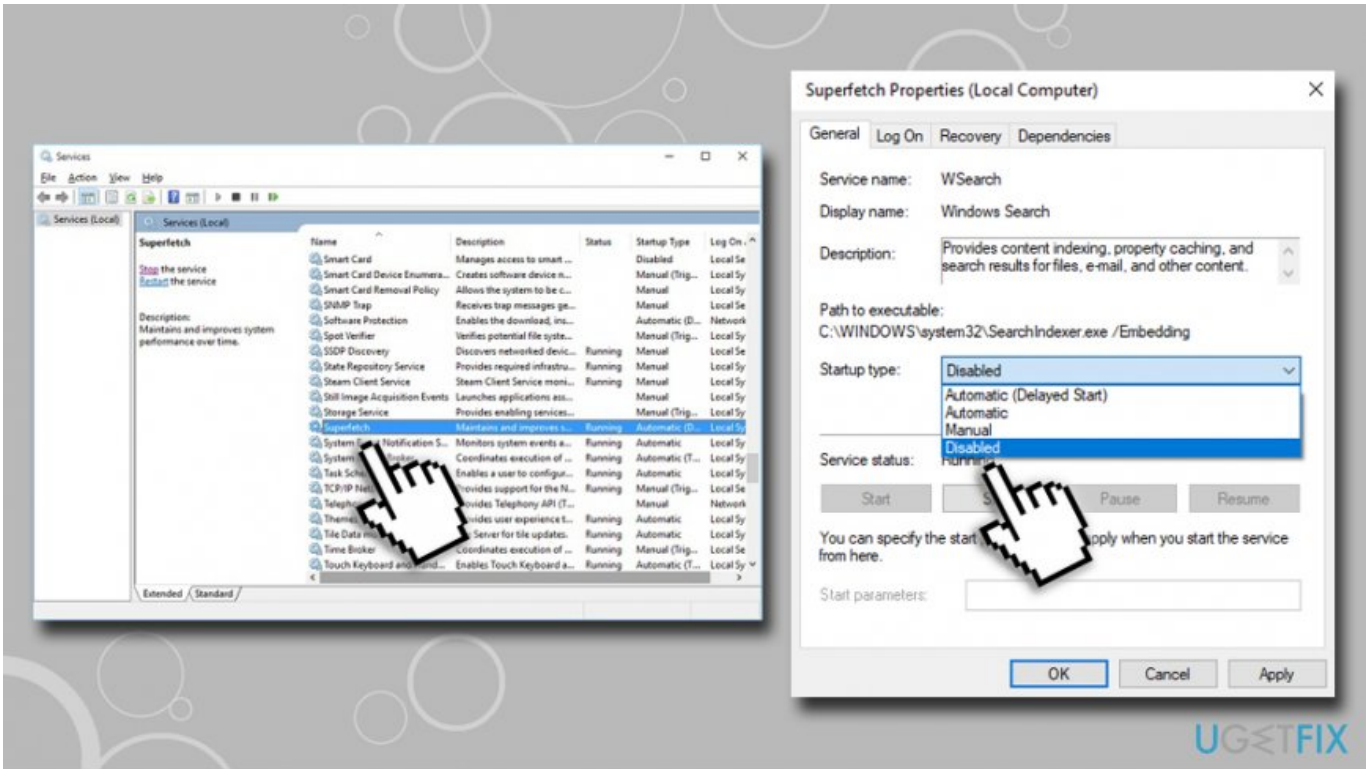




[Appxsvc Appx Deployment Service Appxsvc](#)



[Appxsvc Appx Deployment Service Appxsvc](#)



It includes the AppX Deployment Service (AppXSVC) on both Windows 8 and 10. You can also see the Client License Service (ClipSVC) on Windows 10. The Store applications are updated by Windows Store in the background, and many of the applications included with Windows are fallen into this category.

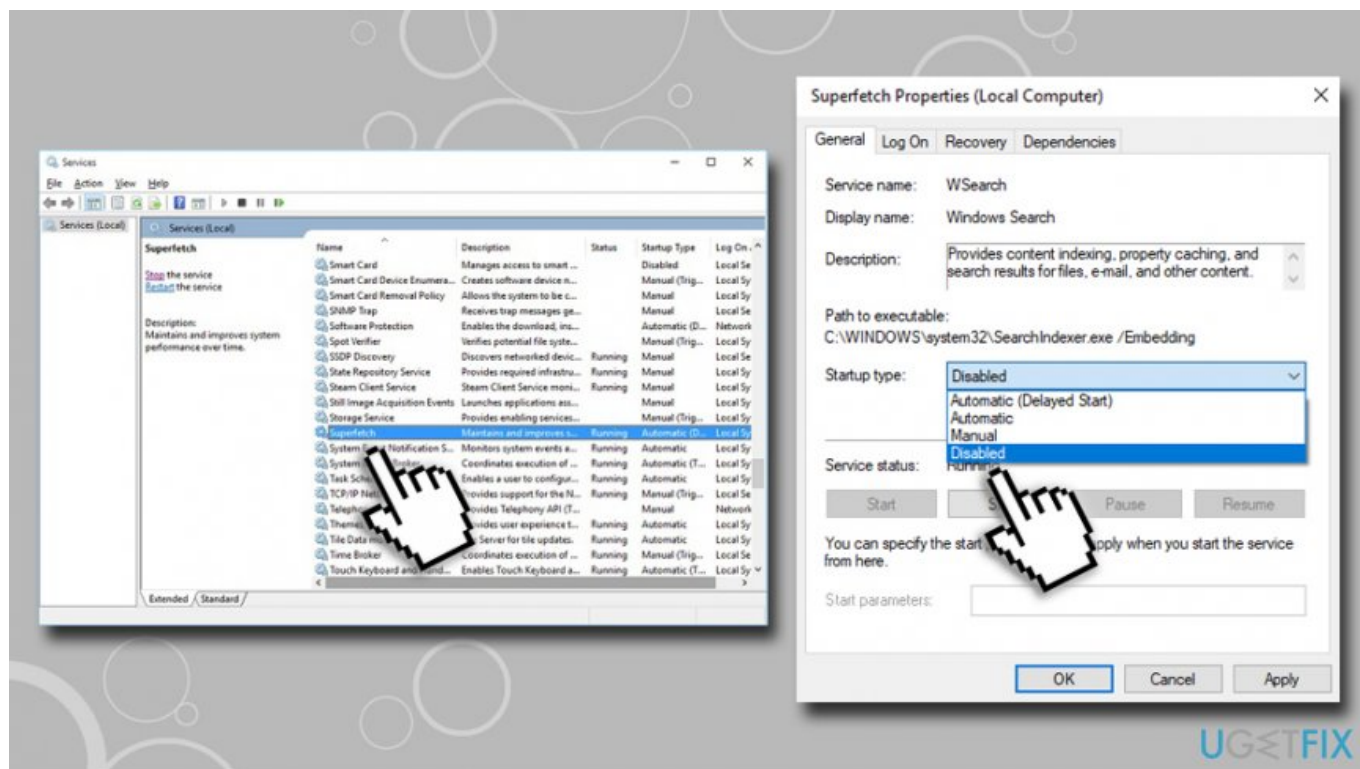
1. [appxsvc appx deployment service \(appxsvc\)](#)
2. [appxsvc appx deployment service \(appxsvc\) co to](#)
3. [what is appx deployment service \(appxsvc\)](#)

Those Universal Windows Platform applications are distributed as AppX packages, then it gets the name. To do that, you need to launch the Store application, click your user icon and then select the Settings option. Why does it happen? When your PC is installing, uninstalling, or updating Store applications, the wsappx service usually uses only a lot of CPU. These services handle the process of installing, removing, and updating Store applications and ensuring they are properly licensed.

appxsvc appx deployment service (appxsvc)

appxsvc appx deployment service (appxsvc), appxsvc appx deployment service (appxsvc) high cpu, appxsvc appx deployment service (appxsvc) co to, appxsvc appx deployment service (appxsvc) คือ, what is appx deployment service (appxsvc), what is appx deployment service

In fact, the ClipSVC process on Windows 10 and the wsappx service on Windows 8 have basically the same description in the Services interface. This may be because you have chosen to install or uninstall applications, or because the store is automatically updating applications on your system.



appxsvc appx deployment service (appxsvc) co to

This is the reason that you may see this process using CPU and disk resources in the background.

what is appx deployment service (appxsvc)

This screen shows all updates for installed applications and you are allowed to install them.. When you manually update apps, you'll still use system resources like CPU and RAM, but at least you get to choose when they're used.. Seeing the resources used by AppXSVC instead of the individual programs installer when you work with Store applications is the only difference.

73563d744f

[Samsung Xpress M2020w For Mac](#)

[hannah fontana](#)

[Office 360 For Mac Download Free](#)

[Quite Imposing Plus Mac](#)

[Download Dxd Season 2 Sub Indonesia](#)

[Sony Vaio Vgn B100b Driver For Mac](#)

[free download Cracker Plus 2.2 Portable](#)

[Hardy split cane rod serial numbers](#)

[Free Flow Charts For Mac Os X](#)

[Watch Mystery Of The Nile Movie Full Length Free](#)